

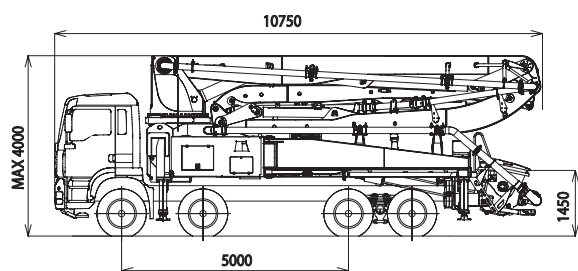
K42L

TRUCK-MOUNTED CONCRETE BOOM PUMP

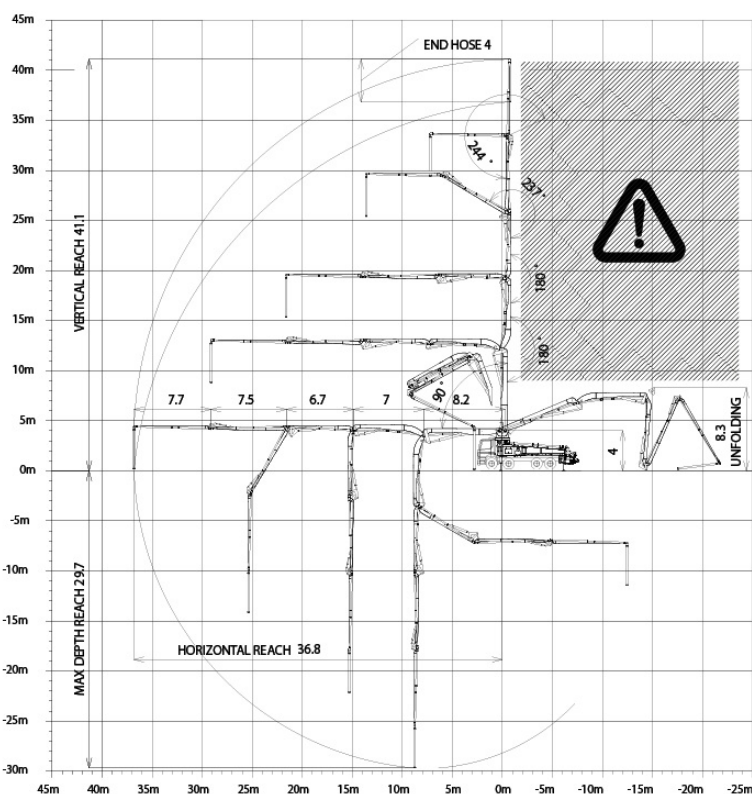
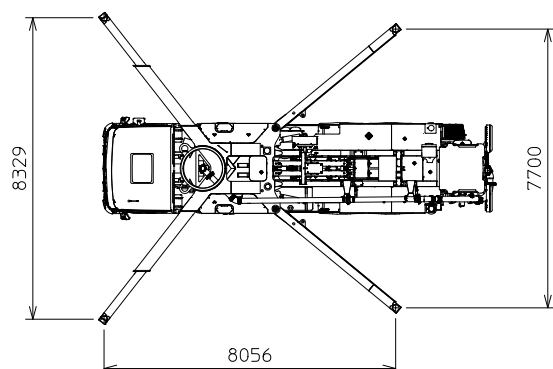
Placing boom	B5RZ 42/38
Pumping unit	HP1808ECX HP1608EC HP1606H
Driven by	PTO
Chassis	4 axles



Dimensions



Dimensions varying according to truck assembly



K42L

Standard equipment

- Advantageous assembling on standard 4 axes chassis
- Self-supporting frame, torsion free, FEM designed
- Placing boom B5RZ 42/37, 5 sections, pipeline diameter 125 mm, "RZ" folding system
- Fully hydraulic outrigger controls on both sides of the truck
- Front "X" style diagonal outriggers with double telescopic opening and swing-out rear outriggers for a quick and easy set-up also in narrow areas
- "Load Sensing" proportional boom control for pumping unit HP-C
- "BFC" Best-Flex Cifa supporting system allowing just one man to change delivery pipeline easily, quickly and safe
- Concrete flow rate regulator
- Safety device on opening inspection hatch
- Pumping unit with closed loop (HP1608EC) or open loop (HP1606H)
- Project conforms to Directive Machinery 2006/42/CE
- 2 Proportional radio control with two boom movement speed, synthesizer for automatic frequency search, 8 position joy stick and concrete flow rate regulator. 20 mt cable
- Double thickness concrete pipes, in high resistant steel and insert carbide chrome - CIFA Long Life Pipes
- Emergency control pad for pumping unit HP-C
- Remote controlled electric vibrator placed on the concrete hopper grid
- Centralized lubrication system for pumping unit
- Automatic oil lubrication system for pumping pistons on HP-C
- Additional manual lubrication system for pumping unit
- Hard plastic outrigger support plates with relative housing
- Rear light on hopper
- Level readers for stabilization control
- Accessories for cleaning and pipes washing
- Fiber glass hopper covering
- Emergency pumping unit kit
(for machine with closed loop pumping unit)

Control system

- Smartronic Silver (available only for machine with closed loop pumping unit):
 - integrated color LCD
 - counters
 - pumping unit management
 - diagnostics
 - capsense rear panel

Main options

- ASC - Advanced Stability Control
(available only for machine with closed loop pumping unit)
- LSC - Light Stability Control
(available only for machine with open loop pumping unit)
- Pneumatic concrete valve - Shut-off valve
- High pressure water pump 28l / 120 bar
- Centralized lubrication system for placing boom
- Separated emergency engine kit for independent control of the concrete pumping unit, boom and water pump

TRUCK-MOUNTED CONCRETE BOOM PUMP

Placing boom	B5RZ 42/37
Pumping unit	HP1808ECX HP1608EC HP1606H
Driven by	PTO
Chassis	4 axes

Pumping unit technical data

Model		HP1808ECX	HP1608EC	HP1606H
Max. theoretical output	m^3/h	180	160	160
Max. pressure on concrete	bar	83	80	53
Max. numbers of cycles per min.	$nr.$	27	31	30
Conc. cylinders (diam. x stroke)	mm	260x2100	230x2100	230x2100
Concrete hopper capacity	l	600	550	550
Hydraulic circuit		closed	closed	open

Placing boom technical data

Model		B5RZ 42/37
Pipeline diameter	mm	125
Max. vertical reach	m	41,1
Max. horizontal distance (from center of slewing axis)	m	36,8
Min. unfolding height	m	8,8
Section numbers		5
1st section opening angle		90°
2nd section opening angle		180°
3rd section opening angle		180°
4th section opening angle		237°
5th section opening angle		244°
Rotating angle		370°
End hose lenght	m	4

Technical data and characteristics subject to modifications without notice